

# Northumberland Joint Health and Wellbeing Strategy 2018-2028

The 10 year Joint Health and Wellbeing Strategy, launched in January 2019, aims to improve the health and wellbeing of Northumberland residents and reduce inequalities. The strategy focussed on 4 key themes:

## - Giving every child and young person the best start in life

All children and young people are happy, aspirational and socially mobile

## - Taking a whole system approach to improving health and care

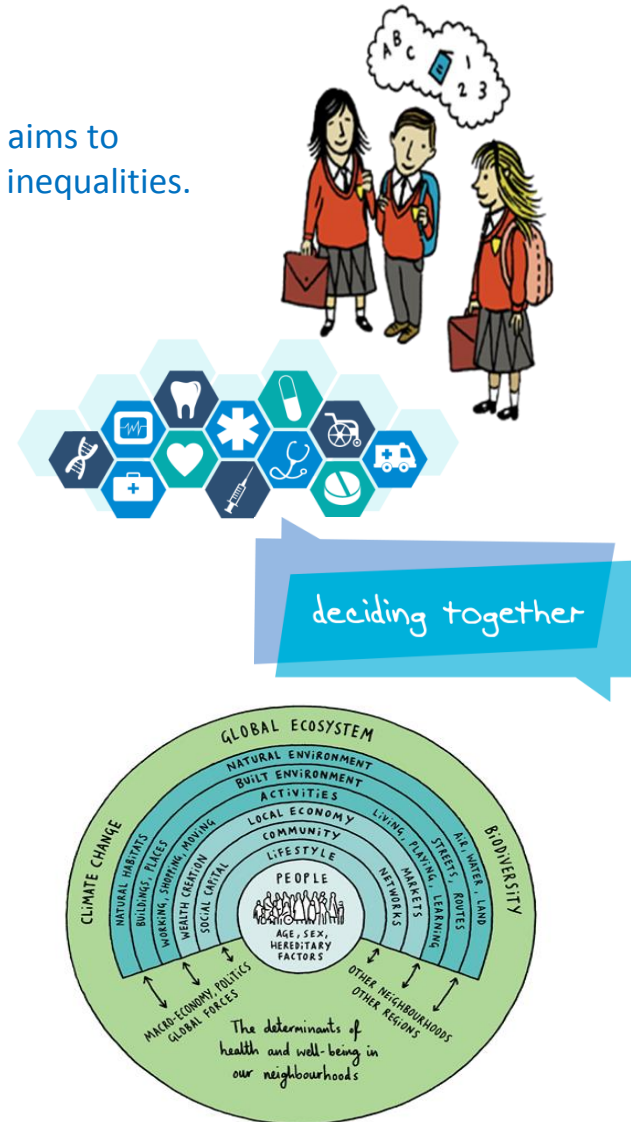
To maximise value from, and sustainability of, health and social care and other public services for improving the health of the people of Northumberland, reducing health inequalities.

## - Empowering people and communities

People and communities in Northumberland are listened to, involved and supported to maximise their wellbeing and health.

## - Addressing some of the wider determinants

People's health and wellbeing is improved through addressing wider determining factors of health that affect the whole community.



# Joint Health and Wellbeing Strategy 2018/28

## Theme Area: Empowering People and Communities

*People and communities in Northumberland are listened to, involved and supported to maximise their wellbeing and health*

### Key areas of focus:

Support and develop social prescribing activities across the county

Map, mobilise and link community assets

Embed Making Every Contact Count across the health and care system

Develop a care and support planning approach for people with Long Term Conditions

Identify and support carers

Support patients to take an active role in the management of their health

Refresh our approach to supporting healthy ageing

# Joint Health and Wellbeing Strategy 2018/28

Theme Area: Empowering People and Communities - Promote and encompass a more than medicine approach.

## Actions

Action	Current RAG rating	Deliverables	Lead	Timelines & Strategic Frameworks
All GPs in Northumberland will be able to refer people into community activities	Amber	Deliver on social prescribing action plan	Social Prescribing Steering Group (CCG Commissioning Manager)	March 2023
Support staff to deliver health and social wellbeing conversations as part of everyday interactions.	Amber	MECC embedded into training for key health and care groups	Northumberland MECC Steering Group (Public Health Consultant – NCC PH/NHFT)	Ongoing
Implement 'It's all about you' initiative across outpatients in Northumbria Healthcare Trust.	Amber	Evaluate current 'Its all about you' initiative	Public Health Consultant - NHFT	March 2020

# Joint Health and Wellbeing Strategy 2018/28

**Theme Area: Empowering People and Communities - Facilitate and increase access to networks and activities that support good health and wellbeing.**

## Actions

Action	Current RAG rating	Deliverables	Lead	Timelines & Strategic Framework
Deliver Empowering Communities project	Amber	<ul style="list-style-type: none"> <li>Map community assets</li> <li>Develop community directory</li> <li>Increase connectivity and numbers of community groups</li> </ul>	Public Health – Consultant in Public Health	By September 2021 (for mapping and directory)
Review Ageing Well programme and agree future model of delivery	Amber	Ageing Well evaluation	Director of Public Health	December 2019
See social prescribing action	Amber	See previous slide	See previous slide	

# Joint Health and Wellbeing Strategy 2018/28

**Theme Area: Empowering People and Communities - Support people to gain the knowledge, skills and confidence they need to be active partners in managing and understanding their own health and healthcare**

## Actions

Action	Current RAG rating	Deliverables	Lead	Timelines & Strategic Framework
Expand the uptake of Personal Health Budgets	Green	Continued increase in use of PHBs	Ops Manager – Self Directed Support, Prevention and Carers (NHFT)	Quarterly reporting
Raise awareness of the needs of carers and facilitate access to support	Amber	<ul style="list-style-type: none"> <li>Provide training for key health and care workers on needs of carers</li> <li>Increase the numbers of carers assessments</li> </ul>	Ops Manager – Self Directed Support, Prevention and Carers (NHFT)	Carers Partnership Board
Promote and expand 'Year of Care' approach to support people with Long Term Conditions	Amber	GP practices trained and supported to adopt a care and support planning approach	National Director – Year of Care Partnerships	Year of Care training and support provided to identified services in NHFT by Mar 20

# Joint Health and Wellbeing Strategy 2018/28

## Theme Area: Empowering People and Communities

### Metrics

Metric	RAG rating	NE Comparator	National	Notes
% of adults in contact with social care who have as much social contact as they would like	47.3% (2017/18)	49.8%	46%	
% of adult carers who have as much social contact as they would like	44.7% (2016/17)	44.8%	35.5%	
1% of population supported by primary care link workers by 2021. 3% by 2023/24	Amber	Not available	Not available	
Year on year increase in practices implementing year of Care	Amber	Not available	Not available	
Proportion of link workers trained to agreed competencies. 30% Dec 2020, 50% June 2021.	Amber	Not available	Not available	